



TRITON

NS SERIES AMPLIFIER

NS4001 / NS8001 / NS12001 / NS4004 / NS9005





Congratulations and thank you for purchasing Triton mobile amplifier. With a focus on quality, innovation, and value, Triton amplifiers feature a no-compromise design built for today's music. Triton Audio makes no compromises in delivering incredibly accurate sound from a compact chassis.

To make sure your new amplifier performs its best, we strongly recommend you have your new Triton amplifier professionally installed.

Please use your new Triton amplifier responsibly. Listening to very loud music for extended periods of time can cause permanent hearing loss.

Triton NS Series Amplifiers Features:

- Extruded aluminum heatsink
- 12dB/Octave butterworth crossovers
- Variable crossover
- Variable EQ boost 0 – 12dB
- Fixed subsonic filter @ 20Hz

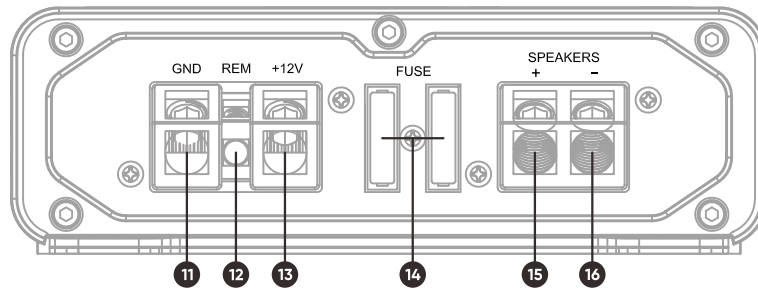
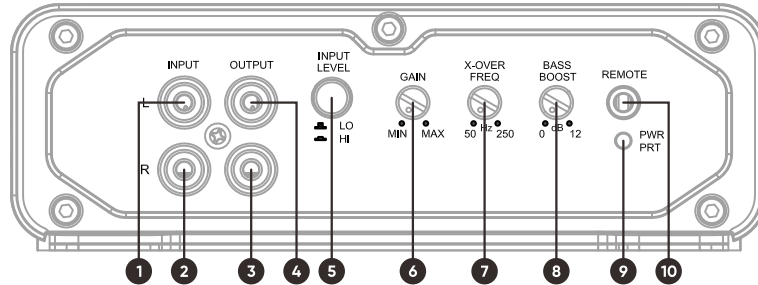
I. Package Contents

- 1 NS Series Amplifier
- Warranty Card

II. Specifications

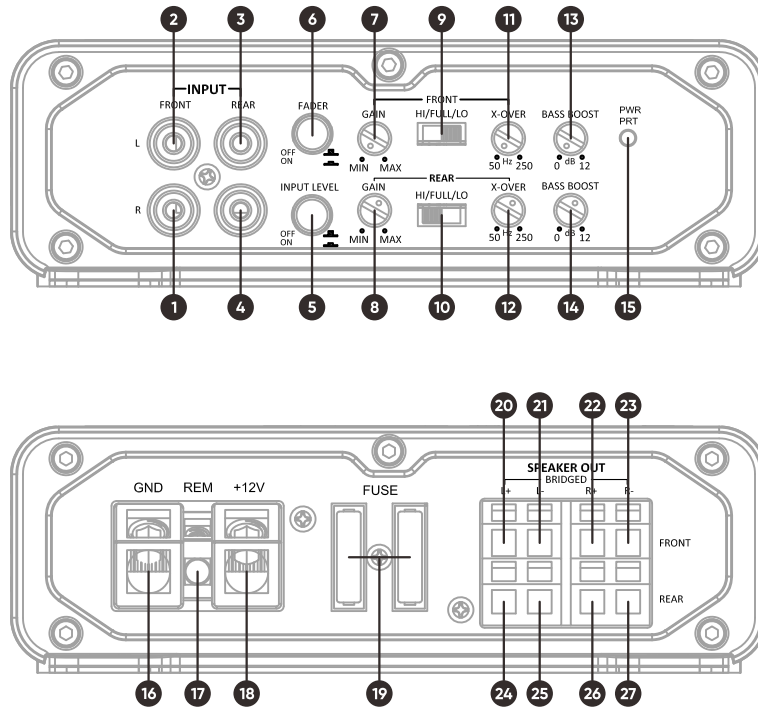
Model	NS4001	NS8001	NS12001	NS4004	NS9005
RMS Power/CH @ 4Ω	150W	350W	500W	50W×4	60W×4 + 200W×1
RMS Power/CH @ 2Ω	250W	500W	800W	100W×4	100W×4 + 350W×1
RMS Power/CH @ 1Ω	400W	800W	1200W	NA	XXX + 500W×1
RMS Power/Bridge @ 4Ω	NA	NA	NA	200W×2	200W×2 + 500W×1 @ 1Ω 200W×2 + 350W×1 @ 2Ω
THD	< 1%	< 1%	< 1%	< 1%	< 1%
Signal/Noise Ratio	> 80dB	> 80dB	> 85dB	> 80dB	> 80dB
Frequency Response -3dB	14Hz - 240Hz	14Hz - 250Hz	13Hz - 250Hz	12Hz - 20KHz	10Hz - 20KHz (MAIN) 13Hz - 242Hz (SUB)
Crossover Frequency (HPF)	NA	NA	NA	50Hz - 250Hz	50Hz - 250Hz
Crossover Frequency (LPF)	50Hz - 250Hz	50Hz - 250Hz	50Hz - 250Hz	50Hz - 250Hz	50Hz - 250Hz
Subsonic	20Hz	20Hz	20Hz	NA	20Hz Only SUB Channel
Subsonic Slope	24dB	24dB	24dB	NA	24dB Only SUB Channel
Dimensions (in)	7.26×6.22×2.03	8.05×6.22×2.03	9.63×6.22×2.03	7.26×6.22×2.03	11.77×6.22×2.03
Input Range	200mV - 6V LOW LEVEL 0.8V - 24V HIGH LEVEL	200mV - 6V LOW LEVEL 0.8V - 24V HIGH LEVEL	200mV - 6V LOW LEVEL 0.8V - 24V HIGH LEVEL	200mV - 6V LOW LEVEL 0.8V - 24V HIGH LEVEL	200mV - 6V LOW LEVEL 0.8V - 24V HIGH LEVEL
Crossover slope	12dB	12dB	12dB	12dB	12dB
VDC input	8V to 16V	8V to 16V	8V to 16V	8V to 16V	8V to 16V
Max Current draw	39.8A	76.2A	129.6A	41.1A	72A

NS4001/NS8001/NS12001



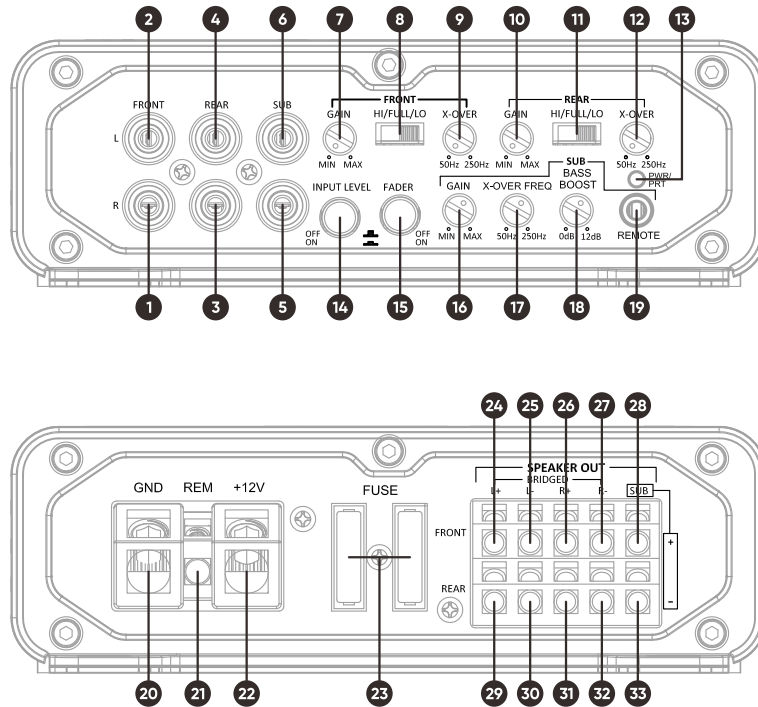
- | | | | |
|----|------------------------------------|----|--|
| 1 | Audio input RCA connect LEFT | 11 | Negative power supply connection (GND) |
| 2 | Audio input RCA connect RIGHT | 12 | REM power supply connection (REM) |
| 3 | Audio output RCA connect RIGHT | 13 | Positive power supply connection (+12V) |
| 4 | Audio output RCA connect LEFT | 14 | Fuse 2 × 40A (NS8001)
Fuse 3 × 40A (NS12001)
Fuse 2 × 20A (NS4001) |
| 5 | Input level switch | 15 | Positive speaker connection |
| 6 | Gain control | 16 | Negative speaker connection |
| 7 | Variable crossover control | | |
| 8 | Variable bass boost control | | |
| 9 | Power on and Protect LED indicator | | |
| 10 | Remote gain control connection | | |

NS4004



- | | |
|---------------------------------------|--|
| 1 Audio input RCA connect FRONT RIGHT | 16 Negative power supply connection (GND) |
| 2 Audio input RCA connect FRONT LEFT | 17 REM power supply connection (REM) |
| 3 Audio input RCA connect REAR LEFT | 18 Positive power supply connection (+12V) |
| 4 Audio input RCA connect REAR RIGHT | 19 Fuse 2 × 20A |
| 5 Input level switch | 20 Positive speaker connection front left (FL+) |
| 6 2/4CH input switch | 21 Negative speaker connection front left (FL-) |
| 7 Gain control front | 22 Positive speaker connection front right (FR+) |
| 8 Gain control rear | 23 Negative speaker connection front right (FR-) |
| 9 Front crossover filter | 24 Positive speaker connection rear left (RL+) |
| 10 Rear crossover filter | 25 Negative speaker connection rear left (RL-) |
| 11 Variable crossover control front | 26 Positive speaker connection rear right (RR+) |
| 12 Variable crossover control rear | 27 Negative speaker connection rear right (RL-) |
| 13 Variable bass boost control front | |
| 14 Variable bass boost control rear | |
| 15 Power on and Protect LED indicator | |

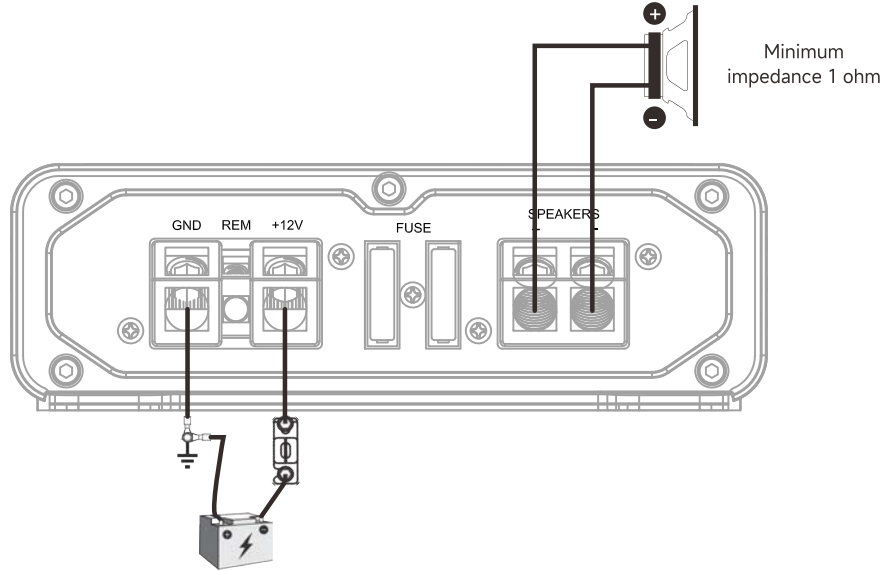
NS9005



- ① Audio input RCA connect FRONT RIGHT
- ② Audio input RCA connect FRONT LEFT
- ③ Audio input RCA connect REAR RIGHT
- ④ Audio input RCA connect REAR LEFT
- ⑤ Audio input RCA connect SUB RIGHT
- ⑥ Audio input RCA connect SUB LEFT
- ⑦ Gain control fron
- ⑧ Front crossover filter
- ⑨ Variable crossover control front
- ⑩ Gain control rear
- ⑪ Rear crossover filter
- ⑫ Variable crossover control rear
- ⑬ Power on and Protect LED indicator
- ⑭ Input level switch
- ⑮ 2/4CH input switch
- ⑯ Gain control SUB
- ⑰ Variable crossover control SUB
- ⑱ Variable bass boost control SUB
- ⑲ Remote gain control connection
- ⑳ Negative power supply connection (GND)
- ㉑ REM power supply connection (REM)
- ㉒ Positive power supply connection (+12V)
- ㉓ Fuse 2 × 40A
- ㉔ Positive speaker connection front left (FL+)
- ㉕ Negative speaker connection front left (FL-)
- ㉖ Positive speaker connection front right (FR+)
- ㉗ Negative speaker connection front right (FL-)
- ㉘ Positive speaker connection SUB (SUB+)
- ㉙ Positive speaker connection rear left (RL+)
- ㉚ Negative speaker connection rear left (RL-)
- ㉛ Positive speaker connection rear right (RR+)
- ㉜ Negative speaker connection rear right (RL-)
- ㉝ Negative speaker connection SUB (SUB-)

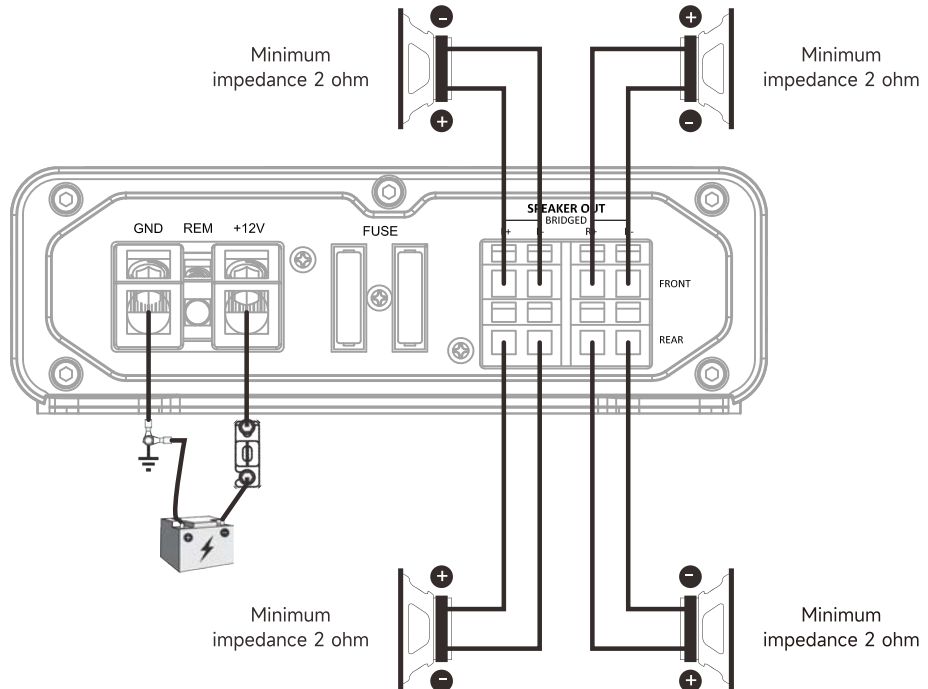
III. Mono Channel Connections

NS4001/NS8001/NS12001



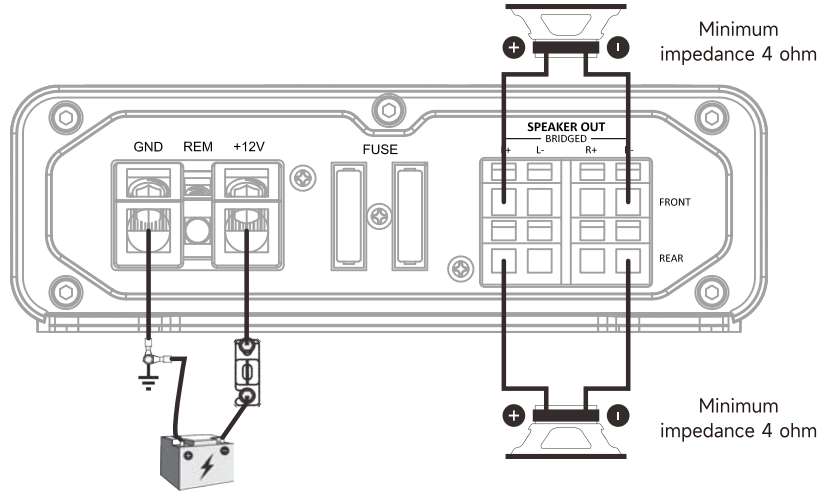
IV. Multi-Channel connections

NS4004

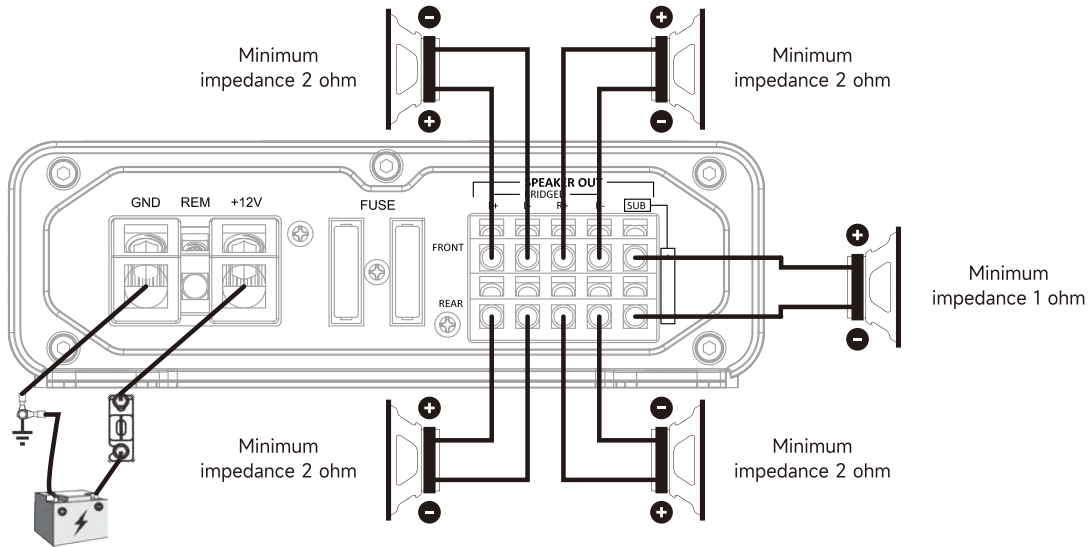


NS4004

BRIDGED CONNECTION



NS9005



BRIDGED CONNECTION

